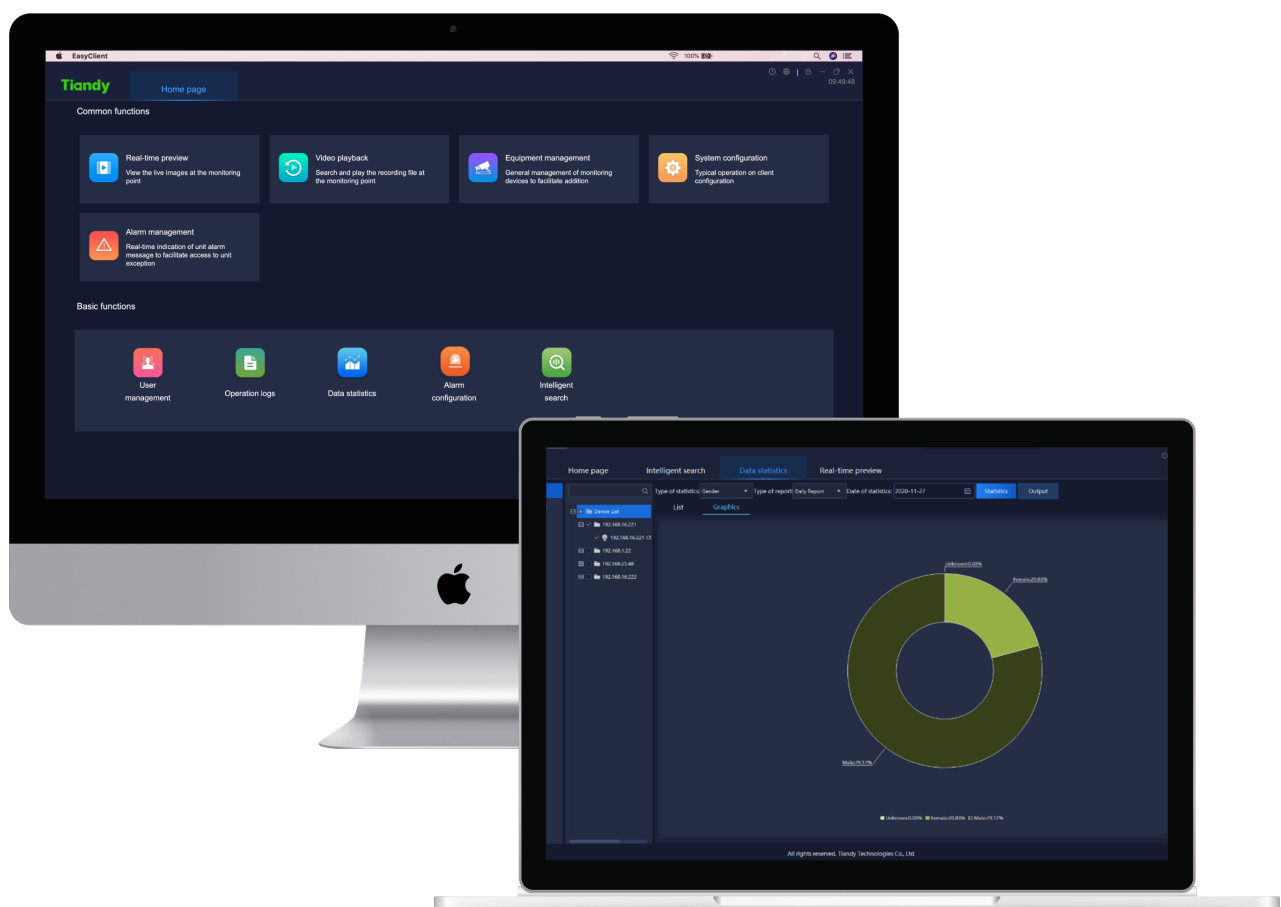


Tiandy



Version: V8.2

Easy7 Smart Client Express for Windows& Mac



OVERVIEW

Easy7 Smart Client Express is an independent video management software based for macOS (64bits) and Windows (64bits) Operation system for Tiandy IP cameras, PTZs, NVRs, XVRs, decoders etc. Maximum 200 IP devices or 512 channels can be connected in Easy7 Smart Client Express. It supports functions like preview, playback, alarm, two-way audio, PTZ control etc. and configurations like device management, user management, storage, event etc.

Easy7 Smart Client provides multiple solutions like people counting solution, fever detection solution, face recognition solution for small and medium scenarios with friendly using experience and intuitive data report.



KEY FEATURES

New UI interfaces

Supports Windows 7/10 64bits and macOS 64bits

Device management

- Search online devices and modify net information
- Supports thermal bullet camera to detect body temperature

Preview

- Supports 1/2/3/4/1-5/1-7/9/10/13/16/17/25/36/49/64 window division mode and customization of display split
- Supports cruising and cruising list
- Supports displaying face capture picture with face information
- Supports displaying face comparison result with face information

Playback

- Supports fast/slow forward, step forward
- Supports 1/2/3/4/9/16 window division mode
- Supports one-key to capture all channels

System Setting

- Supports data backup, recover, clear up and reindex
- Supports 17 languages including English, Simplified Chinese, Traditional Chinese, Russian, Korean, Thai, Vietnamese, Polish, French, Italian, Arabic, Turkish, Spanish, Dutch, Hebrew, Czech and Slovak
- Dark/light skins available
- Drag alarm type to set alarm grade
- Supports setting duration of face picture storage

Alarm

- Add new real-time alarm column, easy to check alarm message
- Supports history alarm search and export

Intelligent Search

- Search face pictures by filters like gender, age, wearing mask or not, wearing glasses or not or unacceptable body temperature



Statistics

- Supports face statistics in list or graphics
- Supports managing up to 64 people counting cameras in one zone and displaying real-time statistics
- Supports people counting statistics in list or graphics

P2P Function

- Add device via P2P
- Live view with audio and remote playback through P2P
- Switch P2P server region

SPECIFICATIONS

Easy7 Smart Client Express	
Supported Devices	IPC, NVR, XVR, PTZ etc.
Max Connected Devices	200 IP devices or 512 channels
System Framework	1. Switch between Chinese and English for installation
	2. Common functions and basic functions
	3. Drag to add new function icon or remove it
	4. Drag to change function icon order
Login	1. Create password when first start the software
	2. Support forgot password by protection questions
	3. Auto login, remember password
	4. Support switching languages in login interface
User Management	1. Add/delete/edit user and configure user authority
	2. Set period of validity
Device Management	1. Auto search devices within same LAN, supports batch and one-key addition
	2. Support manual addition by IP, DDNS, EasyDDNS, P2P (Only for Windows version)
	3. Support group management
	4. Support acquiring device channel name or sync channel name to devices
	5. Support jumping to device IE interfaces in default browser
	6. Support export and import of device and group organization list
Preview	1. Support device list and device online status
	2. Support one-key to connect/disconnect all channels
	3. Support 1/2/3/4/1-5/1-7/9/10/13/16/17/25/36/49/64 window division mode and customization of display split
	4. Support to enable/disable audio and two-way audio
	5. Support capture and one-key to capture all channels
	6. Support to switch main and sub stream, set video parameters
	7. Support record and one-key to record all channels
	8. Support PTZ control, focus, aperture, preset, light/wiper control
	9. Support saving view, view rotating and group switch
	10. Support face capture and display body temperature info during preview
	11. Support face recognition and display comparison result

Playback	1. Support device list and device online status
	2. Playback control, play/pause/fast forward/slow forward/step forward
	3. Support 1/2/3/4/9/16 window division mode
	4. Time line supports zoom in/out
	5. Support capture and one-key to capture all channels
	6. Support to enable/disable audio
	7. Search video by calendar, date, storage location, stream type, etc.
	8. Download video clip by file or by time
Operation Logs	1. Query operation logs by time, type, user, etc.
	2. Export log information
Intelligent Search	1. Retrieve face pictures by time, gender, age, mask, glasses, body temperature
	2. Result can be displayed in list or figure
	3. Check detailed picture or video
	4. Export data
Data Statistics	
Face Statistics	Show face data statistics in list or graphics according to different filter
Visitor Flow Statistic	1. Manage up to 64 people counting camera in one zone and set configuration of people counting rule
	2. Preview of people counting camera
	3. Display peak number, current number and line chart in real time
	4. Support to set time duration of people counting, people capacity alarm, rapidly increased number alarm and number of people stay
	5. Show reported statistic in list or graphics according to different filter
System Configuration	
Common Settings	1. Set capture and download file path
	2. Automatic login
	3. Data backup/recover/clear up/re index (re index face capture and record)
	4. Change language and software skin
	5. 17 languages including English, Simplified Chinese, Traditional Chinese, Russian, Korean, Thai, Vietnamese, Polish, French, Italian, Arabic, Turkish, Spanish, Dutch, Hebrew, Czech and Slovak are supported
	6. Set save time of log and alarm log
Video	1. Set stream switch by automatically or manually
	2. Set play strategy, good fluency or minimum delay
	3. Hardware decoding available for Windows version
	4. Set download format, SDV and MP4 are supported
Alarm Grade	Set alarm grade
Storage Management	1. Set recoding package time, format, stream type
	2. Set space strategy, storage location
Intelligent Application	1. Enable intelligent application to receive face capture pictures and face recognition results
	2. Set face picture save duration by day
	3. Check deletion strategy to set visitor flow statistic save duration by month
P2P Setting	Set P2P server region
Alarm	
Real Time Alarm	1. Real time alarm in Alarm Management, quick to play alarm video or real time video
	2. Support alarm filter by alarm grade
	3. Operator can handle and input comment to real time alarm
	4. Turn on/off alarm audio of software
History Alarm	1. Query history alarm by time, source, status, user
	2. Support alarm filter by alarm grade
	3. Operator can handle and input comment to history alarm

Performance				
Windows (Desktop)				
Spec		Live View	Main stream (ch)	Sub stream (ch)
i5-8Generation 8G Memory Windows 10		1080P/H.264	20	70
		1080P/H.265	20	70
		1080P/S+265	25	70
Windows (Laptop)				
Spec	Mode	Live View	Main stream (ch)	Sub stream (ch)
i5-6300HQ 8G Memory GTX960M Windows 10	CPU Mode	1080P/S+265	5	50
		1080P/H.265	2	50
		1080P/H.264	2	70
	GPU Mode	1080P/S+265	9	75
		1080P/H.265	9	75
		1080P/H.264	9	75
macOS				
Spec		Live View	Main stream (ch)	
Mac Mini (i5-6core/8G)		1080P/H.265	9	
MacBook Pro (i5-4core/8G)		1080P/H.265	6	
iMac (i5-2core/8G)		1080P/H.265	8	

Connection Performance		
Device Type	Network	Channels Number
Tiandy Devices	LAN	512
Tiandy P2P Devices	WAN	512

Export Performance of Face Picture				
Data	Windows	Mac Mini	MacBook	iMac
1 Day Per Channel	3s	<3s	<3s	<3s
1 Week Per Channel	10s	11s	7s	8s
1 Month Per Channel	48s	1' 20"	19s	30s
3 Month Per Channel	30' 7"	5' 59"	1' 27"	1' 55"
91W Face Pictures	4h7min	40min	1h2min	1h19min

RECOMMENDED SYSTEM REQUIREMENT

OS	Windows7、window10、MacOS
CPU	i5-8Generation
Memory	4G
HDD	512G
Network Card	100/1000M Self Adaptive
GPU	GTX1050 4G
Display	1920*1080



Tiandy Technologies Co.,Ltd.

Email: sales@tiandy.com Tel: +86-22-58596178
Website: en.tiandy.com Fax: +86-22-58596048