



TC-C38LS Spec:I8/A/E/Y/M/H/H/2.7-13.5mm/V4.0

8MP Starlight Motorized IR Bullet Camera

Pro Series



KEY FEATURES

- Metal Housing
- Motorized Lens 2.7-13.5mm
- Up to 3840×2160@30fps
- S+265/H.265/H.264/M-JPEG
- Min. illumination Color: 0.0005Lux@F1.6
- Smart IR, IR Range: 80m
- Built-in Mic, support max 512G Micro SD Card
- Support Human/Vehicle Classification
- Audio I/O 1/1, alarm I/O 2/1
- Plugin Free
- Operating Conditions -35°C~ 65°C, 0~95% RH
- POE, IP67, IK10
- Heater



Tiandy Technologies Co.,Ltd.

Email: sales@tiandy.com
Website: en.tiandy.com

Tel: +86-22-58596065
Fax: +86-22-58596048

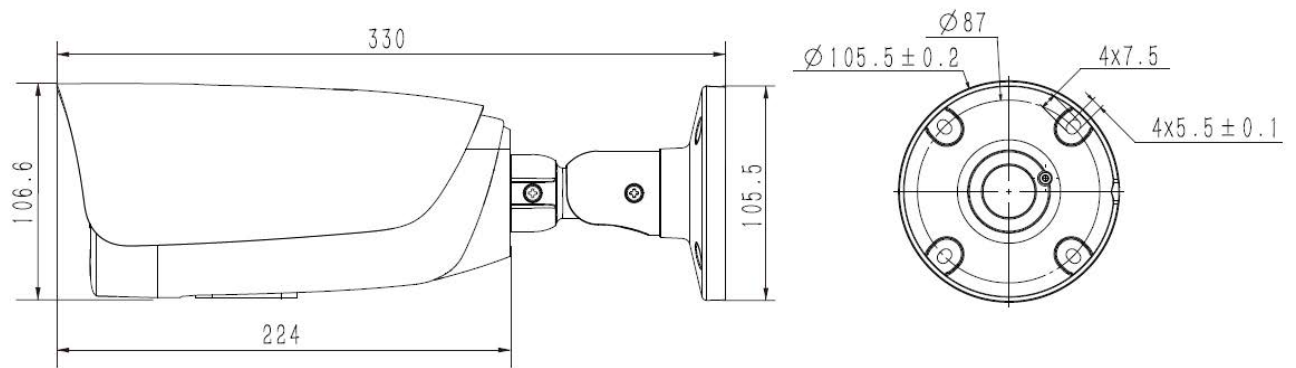
SPECIFICATIONS

Camera	
Image Sensor	1/2.8" Progressive Scan CMOS
Min. Illumination	Color:0.0005Lux@(F1.6,AGC ON),B/W:0Lux with IR
Shutter Time	1s-1/100.000s
Day&Night	Mechanical IR-cut filter with auto switch (ICR)
WDR	120dB
S/N	>42dB
Angle Adjustment	Bracket, pan 0-360°; tilt0-90°; roate0-360°
Lens	
Lens Type	Motorized (Auto focus/Easy focus)
Focal Length	2.7-13.5mm
Lens Mount	Φ 14
Aperture Range	F1.6,Fixed
Field of View	106.7°-31.5°(H);57.3°-17.8°(V);121.1°-36.2°(D)
DORI Distance	Detect:77m-331m Observe:30.55m-131m Recognize:15.5m-66m Identify:7.5m-33m
Illuminator	
IR LEDs	4
IR Distance	80m
Wavelength	850nm
White LEDs	N/A
Whitelight Distance	N/A
Compression Standard	
Video Compression	S+265/H.265/H.264B/H.264M/H.264H/Motion JPEG
Video Bit Rate	32k-16Mbps
Audio Compression	G.711A/G.711U/ADPCM_D/AAC_LC
Audio Sampling Rate	
Image	
Max. Resolution	3840x2160@30fps

Image	
Main Stream	PAL:25fps(3840x2160,3072×2048,2560x1440,2304x1296,1920x1080,1280x720) NTSC:30fps(3840x2160,3072×2048,2560x1440,2304x1296,1920x1080,1280x720)
Sub Stream	PAL:25fps(704x576,704x288,352x288,640x360) NTSC:30fps(704x480,704x240,352x240,640x360)
Third Stream	PAL:25fps(704x576,704x288,352x288,640x480) NTSC:30fps(704x480,704x240,352x240,640x360)
BLC	Yes
HLC	Yes
AGC	Yes
3D DNR	Yes
White Balance	Auto/Semi-auto/Manual/Sunny/Natural light/Warm light/Sodium lamp/Incandescent lamp/Locked white balance
ROI	8 regions
Corridor mode	Yes
LDC (Lens distortion correction)	Yes
OSD	5regions;16*16/32*32/48*48/64*64/96*96
Picture Overlay	1 region
Privacy Mask	4 regions
Defog	Yes
Feature	
Alarm Trigger	Motion Detection;Mask Alarm;Voltage Alarm;Disk Full;Disk R/W Error;IP Address Conflict;MAC Address Conflict;FTP Server Exception ;Event Input, Event Output
Linkage Method	send email;trigger sound;trigger recording;trigger capture;notify surveillance center
Video Analytics	Human/Vehicle Classification;Tripwire;Double Tripwire;Perimeter;Object Abandon;Object Lost;Heatmap;Loitering;Running;Parking;People Counting;Crowed;Safety Helmet Detection;On Duty Detection;Video Abnormal;Audio Abnormal
Rules of behavior analyse in 1 scene	8
SD Card Encryption	YES
Heater	YES
Face Detection	N/A
Face Detection Performance	N/A

Network	
ANR	YES
Protocols	TCP/IP, ICMP, HTTP, HTTPS, DHCP, DNS, DDNS, RTP, RTSP, RTCP, PPPoE, Unicast, MULTICAST, UPnP, FTP, IPV4, NTP, SMTP, IGMP, 802.1x, QoS, IPV6, ARP, UDP, SNMP, SSL, SNTP, RTMP, SFTP, NFS, SSH
System Compatibility	onvif Profile S/T/G/M;CGI;MIL STONE;RTMP
Remote Connection	≤7
Client	Easy7 Smart Client
Moblie Client	EasyLive Plus
Web	IE10+;Firefox52+;Edge89+;Safari11+;Chrome57+
Interface	
Communication Interface	1 RJ45 10M/ 100M self adaptive Ethernet port
Audio I/O	1channel in;1channel out
Alarm I/O	2channel in,3mA,3.3VDC;1channel out,1A,24VDC
Built-In Mic	Yes
Built-In Speaker	N/A
Reset Button	Yes
On-board storage	Built-in Micro SD card slot, up to 512 GB
Additional interfaces	1 channel RS-485
General	
Web Client Language	19languages Simple Chinese/Traditional Chinese/English/Spanish/Korean/Italian/Turkish/Russian/Thai/French/Polish/Dutch/Hebrew/Arabic/Vietnamese/German/Ukrainian/Portuguese/Albanian
Operating Temperature	-35 ~65 , 0~95% RH
Operating Humidity	0-95%
Storage Temperature	-35 ~65 , 0~95% RH
Storage Humidity	0-95%(non-condensing)
Power Supply	DC12V±25%,MAX 13.5 W;POE 802.3at,MAX 15W
Protection	Surge protection 2000V;Lightning proof 6000V;IP67;IK10 EN 55035:2017
Boundary Dimensions	327(L)114(W)105(H)mm
Package Dimensions	360(L)150(W)170(H)mm
GrossWeight	1.6kg
NetWeight	1.15kg
Certificate	CE, EMC and Protection standards EN 55032:2015/A11:2020. EN 55035:2017/A11:2020 EN IEC 61000-3-2:2019/A1:2021, EN 61000-3-3:2013/A1:2019 EN 50130-4:2011/A1:2014 IEC 61000-4-2:2008, IEC 61000-4-3:2020, IEC 61000-4-4:2012 IEC 61000-4-5:2014+AMD1:2017, IEC 61000-4-6:2013 IEC 61000-4-8:2009. IEC 61000-4-11:2020 EN 62262:2002/A1:2021 EN 60529:1991+A1:2000+A2:2013 EN IEC 62368-1:2020+A11:2020

DIMENSIONS (Unit: mm)



ACCESSORIES



A36_V5.0



A22



A35_V5.0