



## TC-C32MS Spec:I3/A/E/Y/M/S/H/2.7-13.5mm/V4.0

Dome Camera

Pro Series



### KEY FEATURES

- Metal housing
- Up to Max. Resolution
- S+265/H.265/H.264B/H.264M/H.264H/Motion JPEG
- Color:0.002Lux@(F1.6,AGC ON),B/W:0Lux with IR
- IR Range 30m
- Built-in Mic
- Support microSD/microSDHC/microSDXC card, up to 512 GB
- Support Smart surveillance, Face Capture
- Support Human/Vehicle Classification
- Operating Conditions -40°C~65°C(No turning on the light), Humidity 95% or less (no condensation)
- DC12V±25%,MAX 7W, POE 802.3af,MAX 8W
- IP66



Tiandy Technologies Co.,Ltd



Tiandy Overseas



Tiandy



@tiandyofficial

**Tiandy Technologies Co.,Ltd.**

Email: sales@tiandy.com

Tel: +86-22-58596065

Website: en.tiandy.com

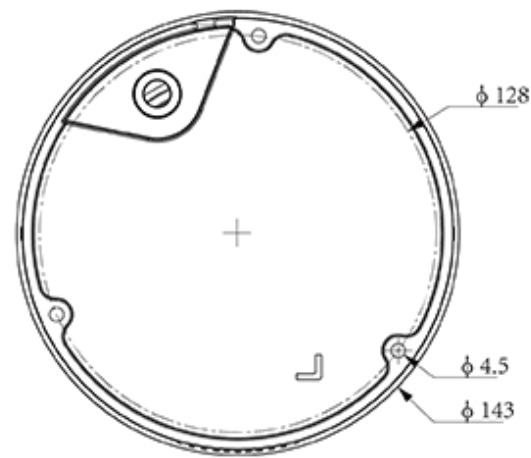
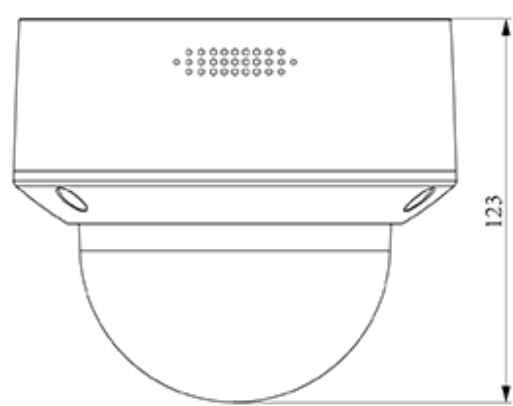
Fax: +86-22-58596048

SPECIFICATIONS

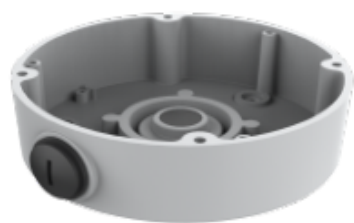
| Camera               |   |
|----------------------|---|
| Image Sensor         | 1/2.8"CMOS  |
| Min. Illumination    | Color:0.002Lux@(F1.6,AGC ON),B/W:0Lux with IR   |
| Shutter Time         | 1s~1/100000s  |
| Day&Night            | IR-cut filter with auto switch (ICR)  |
| WDR                  | 120dB   |
| S/N                  | >42dB   |
| Angle Adjustment     | 0~345°(P); 0~90°(T); 0~350°(R)  |
| Lens                 |   |
| Lens Type            | Motorized   |
| Focal Length         | 2.7~13.5mm  |
| Lens Mount           | Φ14   |
| Aperture Range       | F1.6  |
| Field of View        | 102.9°~31.4°(H); 55°~17.9°(V); 116.7°~36.1°(D)  |
| DORI Distance        | Detect:38.5m~165.5m<br>Observe:15m~65.5m<br>Recognize:7.5m~33m<br>Identify:3.5m~16.5m                     |
| Illuminator          |   |
| IR LEDs              | 18  |
| IR Distance          | 30m   |
| Wavelength           | 850nm   |
| Compression Standard |   |
| Video Compression    | S+265/H.265/H.264B/H.264M/H.264H/Motion JPEG  |
| Video Bit Rate       | 32k~8Mbps   |
| Audio Compression    | G.711A/G.711U/ADPCM_D/AAC_LC  |
| Audio Sampling Rate  | 8kHz/32kHz/48kHz  |
| Image                |   |
| Main Stream          | PAL:25fps(1920×1080, 1280×720, 640×480, 704×576)<br>NTSC:30fps(1920×1080, 1280×720, 640×480, 704×480)     |
| Sub Stream           | PAL:25fps(704×576, 704×288, 352×288, 640×360)<br>NTSC:30fps(704×480, 704×240, 352×240, 640×360)           |
| Third Stream         | PAL:25fps(704×576, 704×288, 352×288)<br>NTSC:30fps(704×480, 704×240, 352×240)                             |
| BLC                  | Yes   |
| HLC                  | Yes   |
| AGC                  | Yes   |
| 3D DNR               | Yes   |
| White Balance        | Auto/Semi-Auto/Manual/Sunshine/Nature Light/Warmlight Lamp/Daylight Lamp/Filament Lamp/Lock White Balance |
| ROI                  | 8 rectangular static areas  |
| Corridor mode        | Yes   |

|                                      |  |
|--------------------------------------|--|
| OSD                                  | Overlay of additional characters in 5 regions, 1 line, with a maximum of 127 characters or 42 Chinese characters per region; 16*16/32*32/48*48/64*64   |
| Picture Overlay                      | 1*200x200 size BMP 16 color bit image overlay  |
| Privacy Mask                         | 4 black static areas   |
| Defog                                | Yes  |
| <b>Feature</b>                       |  |
| Alarm Trigger                        | Motion Detection; Mask Alarm; Voltage Alarm; Disk Full; Disk R/W Error; IP Address Conflict; MAC Address Conflict; FTP Server Exception ; Event Input, Event Output                          |
| Linkage Method                       | send email; trigger sound; trigger recording; trigger capture; notify surveillance center  |
| Video Analytics                      | Human/Vehicle Classification; Tripwire; Perimeter; Video Abnormal; Audio Abnormal  |
| Rules of behavior analyse in 1 scene | 8  |
| Face Mode                            | Face Capture   |
| Face Detection Performance           | 8; 4   |
| <b>Network</b>                       |  |
| ANR                                  | Yes  |
| Protocols                            | HTTP; HTTPS; TCP/IP; UDP; UPnP; ICMP; IGMP; SNMP; DHCP; DNS; DDNS; Easy DDNS; NTP; SMTP; SSL; 802.1X; QoS; IPv4; IPv6; PPPOE; SSH; Unicast; Multicast; RTCP; ARP; SRTP; RTSP; FTP; SFTP; NAS |
| System Compatibility                 | ONVIF Profile S/T/G/M; CGI; Milestone; RTMP  |
| Remote Connection                    | ≤7   |
| Client                               | Easy7 Smart Client   |
| Moblle Client                        | EasyLive Plus  |
| <b>Interface</b>                     |  |
| Communication Interface              | 1*RJ-45,10/100 Mbps self-adaptive Ethernet port  |
| Audio I/O                            | 1; 1   |
| Alarm I/O                            | 1-ch,TTL input,3mA,3.3VDC; 1-ch,TTL output,30mA,12VDC  |
| Reset Button                         | Yes(Built-in)  |
| On-board storage                     | Support microSD/microSDHC/microSDXC card, up to 512 GB   |
| RTC                                  | Yes  |
| <b>General</b>                       |  |
| Web Client Language                  | 19 languages<br>Simple Chinese/Traditional Chinese/English/Spanish/Korean/Italian/Turkish/Russian/Thai/<br>French/Polish/Dutch/Hebrew/Arabic/Vietnamese/German/Ukrainian/Portuguese/Albanian |
| Operating Temperature                | -40°C~65°C(No turning on the light)  |
| Operating Humidity                   | Humidity 95% or less (no condensation)   |
| Storage Temperature                  | -40°C~65°C   |
| Storage Humidity                     | Humidity 95% or less (no condensation)   |
| Power Supply                         | DC12V±25%,MAX 7W; POE 802.3af,MAX 8W   |
| Protection                           | Surge4000V; ESD6000V; IP66; IK10   |
| Boundary Dimensions                  | 143(L)143(W)124(H)mm   |
| Package Dimensions                   | 250(L)180(W)175(H)mm   |
| GrossWeight                          | 1.16kg   |

DIMENSIONS (Unit: mm)



Assembly diagram of Junction Box



TC-P54BM SpecV3



A28