

How to set up tv wall in K2000

Description: This document will show you how to set up tv wall in K2000

Prerequisites: Need K2000,decoder,monitor,camera

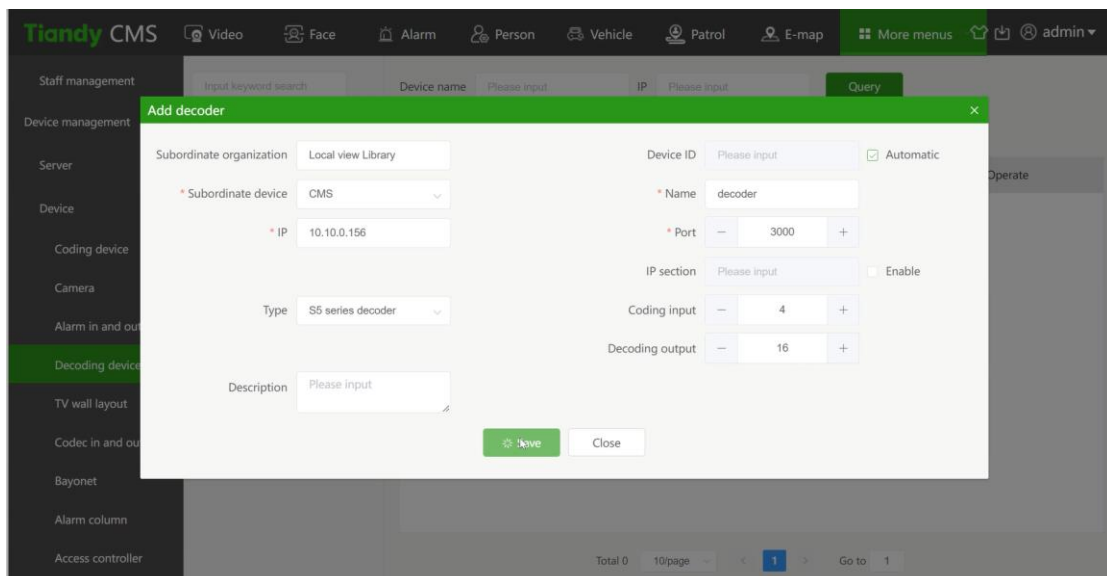
Section 1: How to add decoder to K2000

1. Add decoding device

1.1 Click More menus > Device management > Device > Decoding device

1.2 Add device: select organization list > add decoder > select subordinate > input ip address, name, coding input, decoding output

Note: Coding input and decoding output depends on the actual parameters of decoder

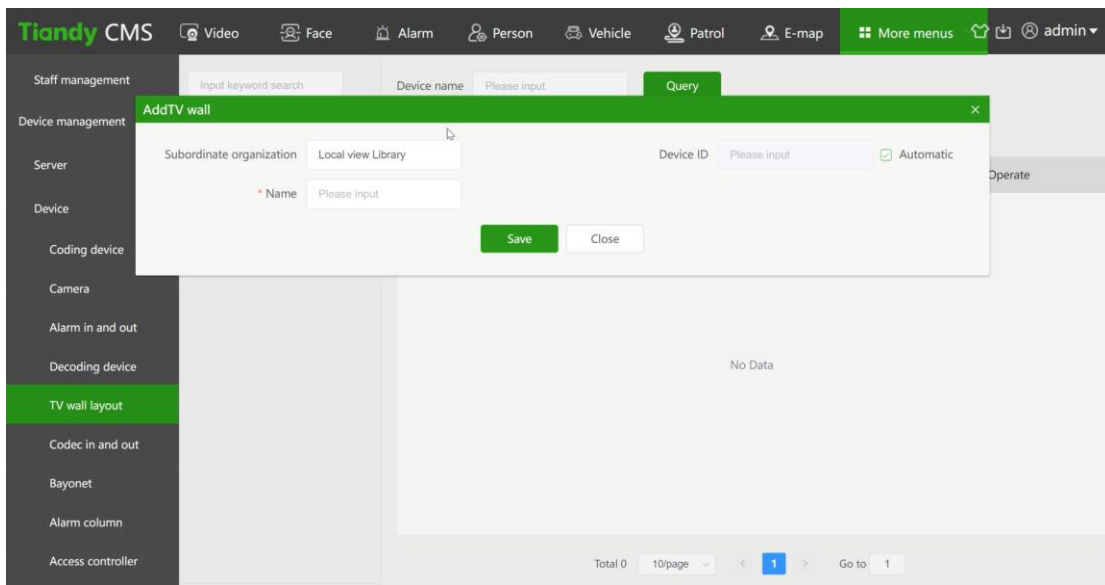


Section 2 : How to setup TV wall layout

1. Add TV wall

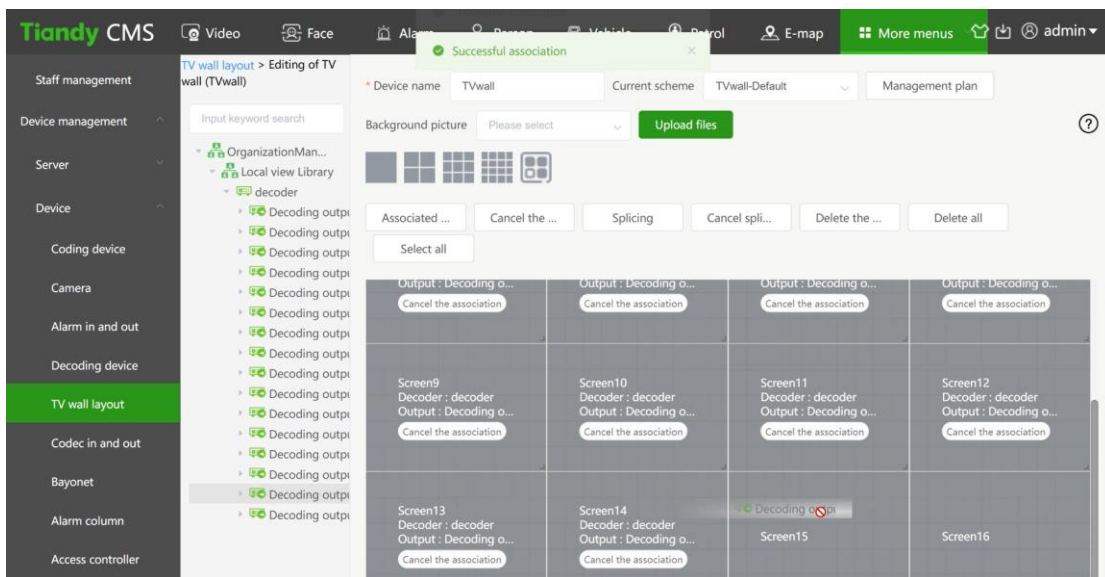
1.1 Click More menus > Device management > Device > TV wall layout

1.2 Input name of TV wall



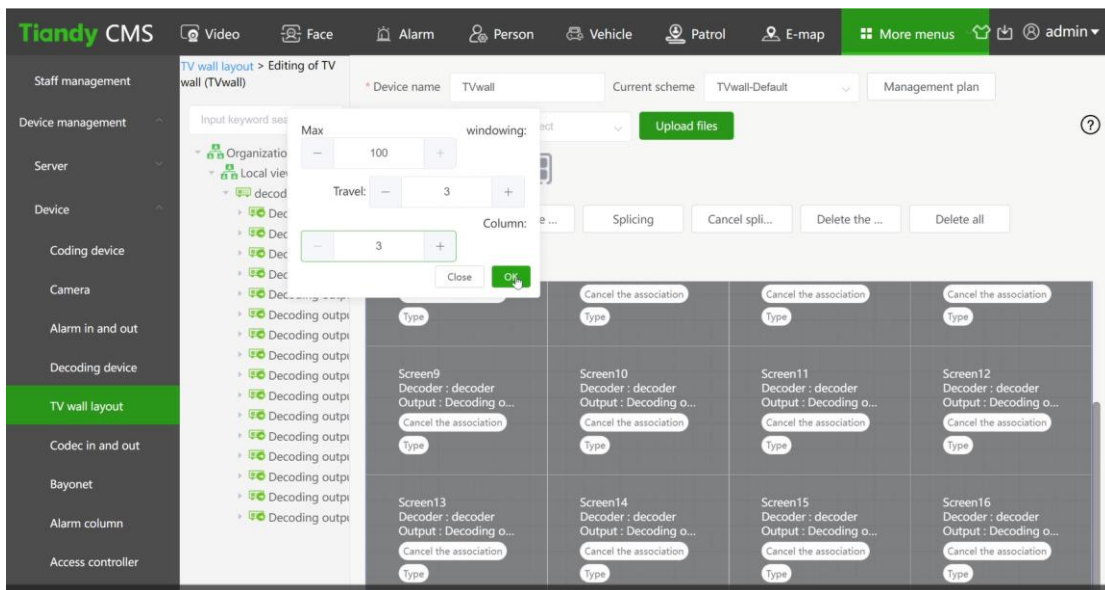
2.Edit TV wall

2.1 Select the screen number > Associated decoding output by drag the decoding output list to screens > Save



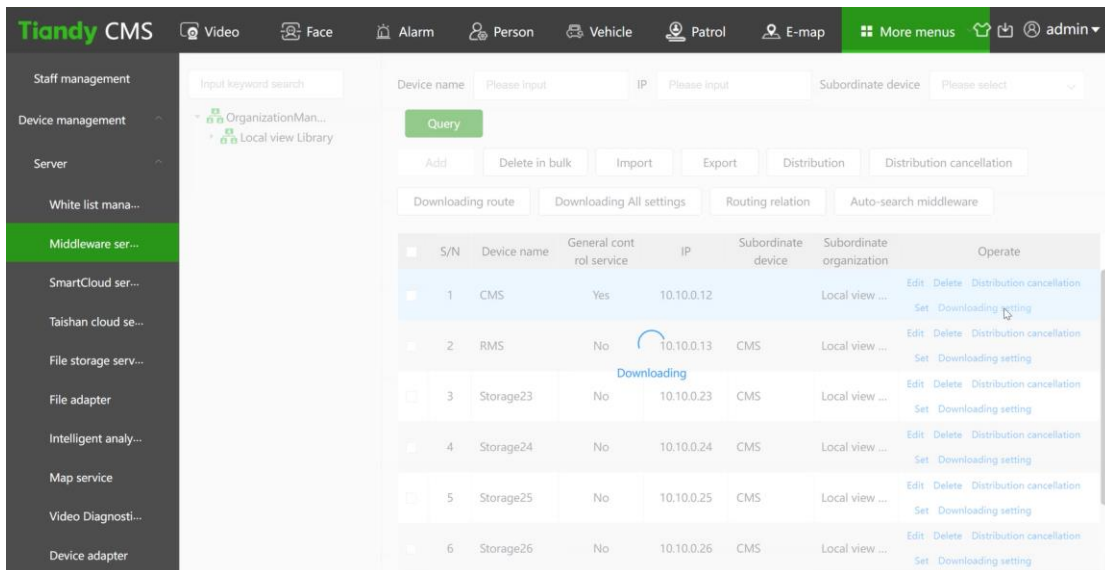
Note: Decoding output corresponds to screen one by one

2.2 Select the screens > Click splicing



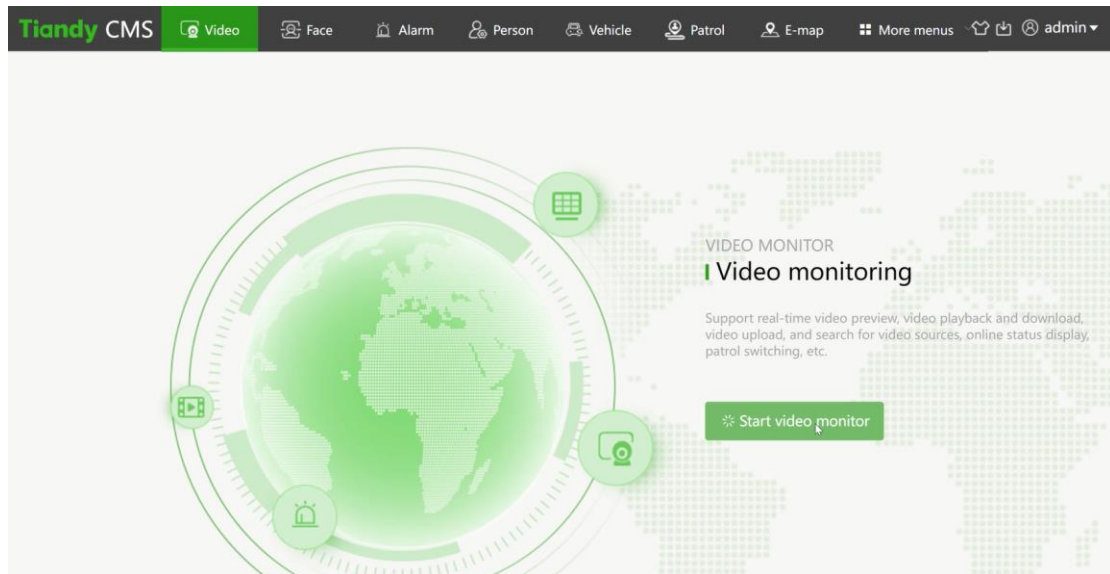
3.Download setting

3.1 Click More menus>Device management>Server>Middleware server>Download setting

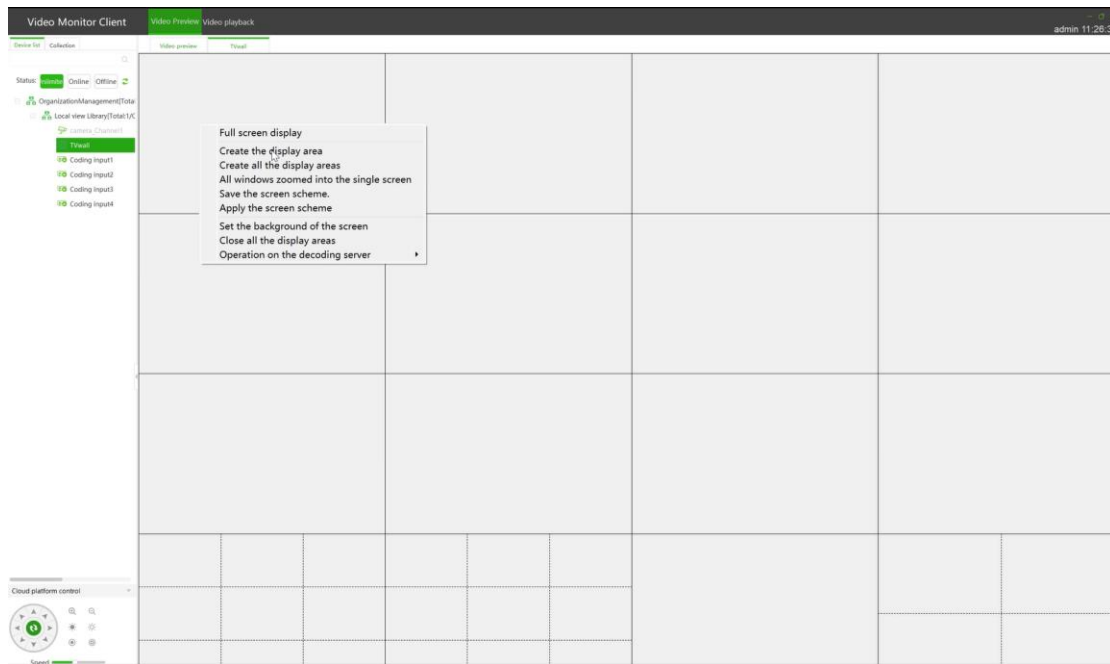


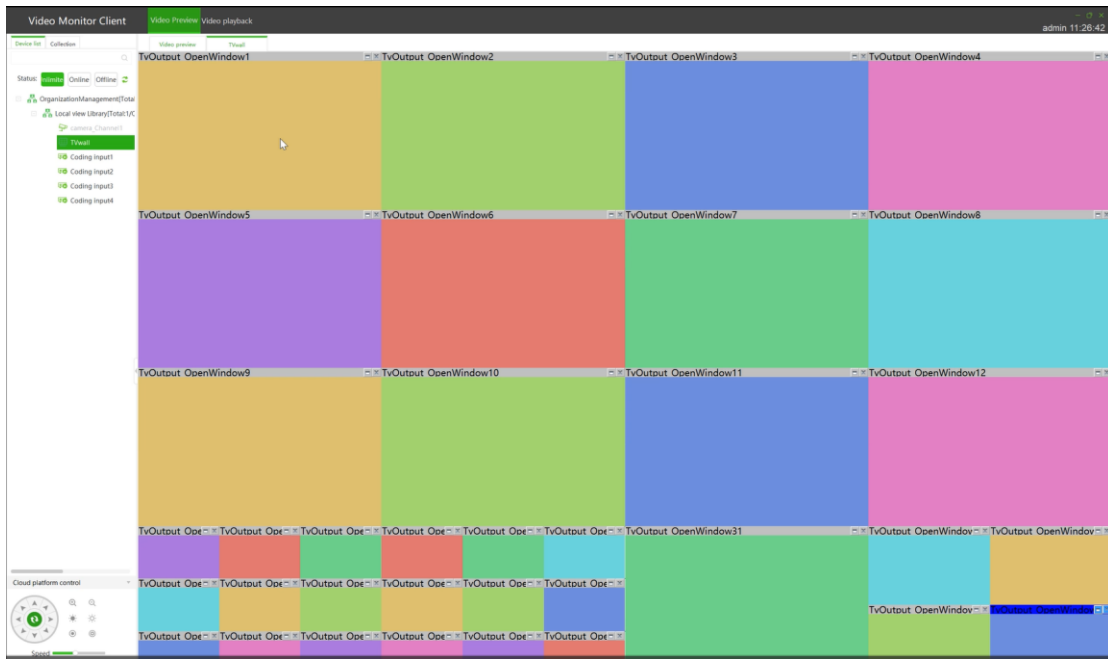
4.Live view of TV wall

4.1 Video>Star video monitor



4.2 Select Tv wall > right click > Create all the display areas





4.3 Select synchronize video display > select screen > select the camera which you want to display in monitor > Successfully displayed

